

*From Chaos to Consistency:
Moving Towards Data Stewardship and Sharing for the
Watershed Research Cooperative*

Investigators:

PI: *Jon A. Souder, Ass't. Professor & Specialist, Forest Watershed Extension; Interim Director, Watershed Research Cooperative.*

Co-PIs: *Jeff Hatten, Assoc. Professor, Forest Soils, FERM*

Lisa Ganio, Assoc. Professor, Statistics, FES

Kevin Bladon, Ass't. Professor, Hydrology, FERM

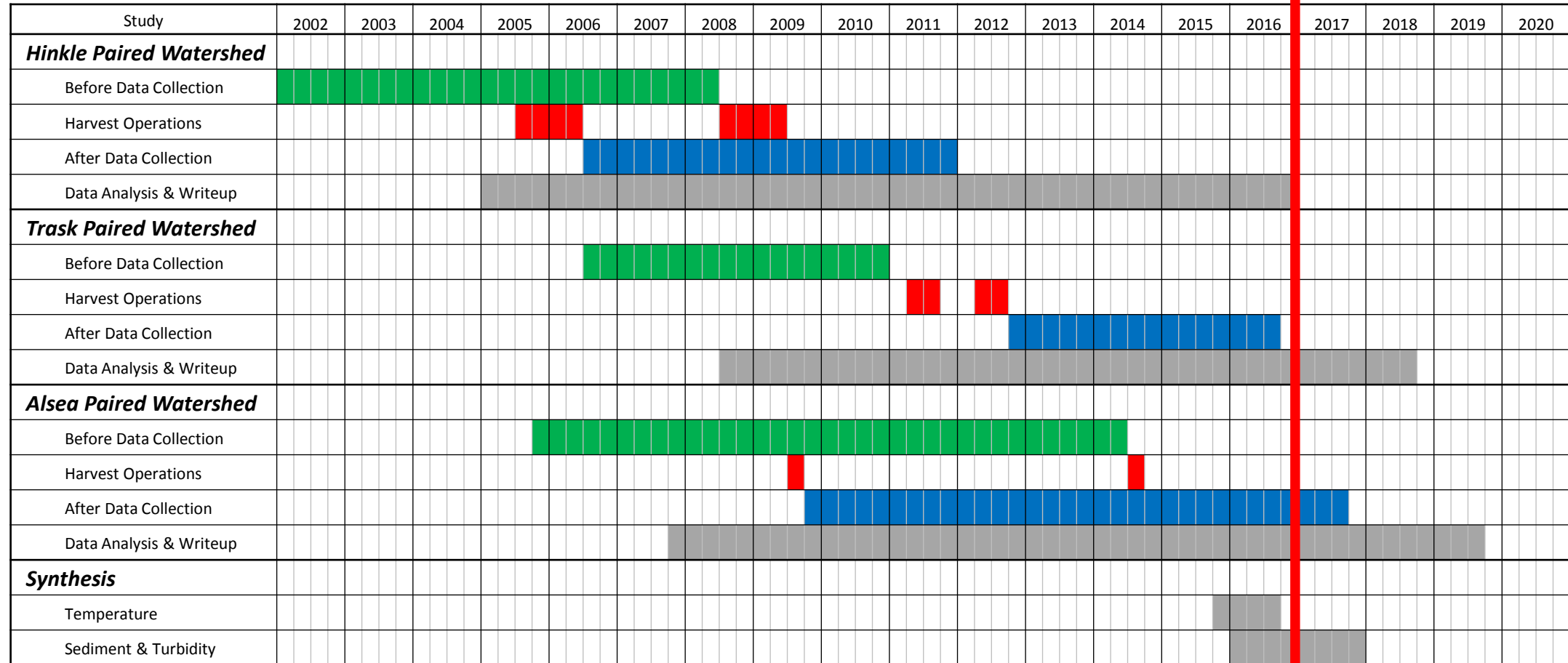
Cooperator: *Clara Llebot Lorente, Ass't. Professor & Data Management Specialist
OSU Valley Library Research Data Services*

*From Chaos to Consistency:
Moving Towards Data Stewardship and Sharing for the
Watershed Research Cooperative*

Project Objectives:

1. Design stewardship and management framework.
2. Meet “best practices” for data archiving and sharing.
3. Begin populating framework with WRC data.

Timing of Activities in WRC's Paired Watershed Studies



FWHMF – Funded Project Activities

- 1. Convene Steering Committee.**
- 2. Bring in Expert Assistance (0.2 FTE) to design data framework.**
- 3. Design a Data Management Framework**
- 4. Use Alsea Revisited as a pilot to begin migrating data.**
- 5. Develop workplan and funding strategy to incorporate remaining WRC data.**

FWHMF – Progress on Project Activities

1. Convene Steering Committee.

Tasks for the committee will include preparing the position description (PD) and selecting the data manager; researching and identifying an appropriate framework design; developing guidelines, methods, and responsibility for other data users; and quarterly review of the data manager's progress.

- **Negotiated agreement with OSU's Valley Library to partner with the Watershed Research Cooperative in this project.**
- **Deferred the initial Steering Committee meeting until we coordinate with potential members' organizations on their participation. This is on-going, but expected to be completed by the end of 2016.**

FWHMF – Progress on Project Activities

2. Obtain Expert Technical Assistance.

- OSU Valley Library Research Data Services Group has agreed to provide Dr. Clara Llebot Lorente, their data management specialist, to staff the project using FWHMF project funds.**
- Steven Van Tuyl in Research Data Services to archive physical records (i.e., the sediment filters, photos, etc.) from the Paired Watershed Studies.**
- Coordinating with Ruth Vondracek in the OSU Valley Library's Special Collections & Archives to obtain, catalog and scan the original Alsea study records.**

FWHMF – Progress on Project Activities

3. Design a Data Management Framework.

- Dr. Llebot Lorente is interviewing PIs and data managers involved with the PWS.**
- She has also created a structured interview questionnaire to be used with data producers and consumers to understand workflows and practices.**
- A data inventory and data descriptors for all three PWS is underway.**
- Identified data management models used by other long-term research projects that could possibly be adopted for the WRC.**

FWHMF – Progress on Project Activities

4. Pilot Process Using Alsea Revisited data.

- Created a consistent data file structure for the WRC files.**
- Migrated Alsea Revisited data into this common file structure.**
- Conducted a QA/QC analysis for the Alsea Revisited streamflow data.**
- Working with NCASI to incorporate their Alsea Revisited QA/QC datasets.**

FWHMF – Progress on Project Activities

5. Develop workplan and funding strategy to incorporate remaining WRC data.

- Working with Special Collections & Archives to develop estimates of time and funding needed to catalog the original Alsea study records they've collected.**
- Working with PIs associated with the PWS to incorporate a data management budget line item into their manuscript publication proposals.**
- Working with the CoF to identify potential funding sources to implement the data management plan.**

FWHMF – Barriers to Success

Data ownership and publication policies are unclear and inconsistent among the three Paired Watershed Studies.

- 1. Established a Publications Policy Committee at the 2016 WRC Business Meeting.**
- 2. Informed the PIs for the two current PWS of the MOA language with the funders regarding data ownership and publication.**
- 3. Obtained “*best practices*” standards from journal editors, Federal and State laws, agency policies, and OSU policies.**
- 4. Working with WRC funders to encourage/require their grantees to provide data for open use and archiving.**

Questions?